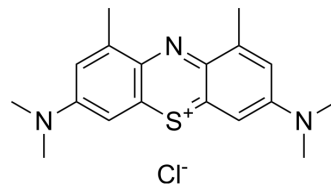


## 1,9-Dimethylmethylene blue

Cat. No.:	HY-169798
CAS No.:	23481-50-7
Molecular Formula:	C <sub>18</sub> H <sub>22</sub> ClN <sub>3</sub> S
Molecular Weight:	347.91
Target:	Fluorescent Dye
Pathway:	Others
Storage:	Please store the product under the recommended conditions in the Certificate of Analysis.



### BIOLOGICAL ACTIVITY

Description	1,9-Dimethylmethylene blue is a fluorescent dye that can be used for detection of sulfated glycosaminoglycans <sup>[1]</sup> .
-------------	--

### REFERENCES

[1]. Farndale RW, et al., A direct spectrophotometric microassay for sulfated glycosaminoglycans in cartilage cultures. *Connect Tissue Res.* 1982;9(4):247-8.

**Caution: Product has not been fully validated for medical applications. For research use only.**

Tel: 609-228-6898

Fax: 609-228-5909

E-mail: tech@MedChemExpress.com

Address: 1 Deer Park Dr, Suite Q, Monmouth Junction, NJ 08852, USA