

Catalog Number: IR108-442

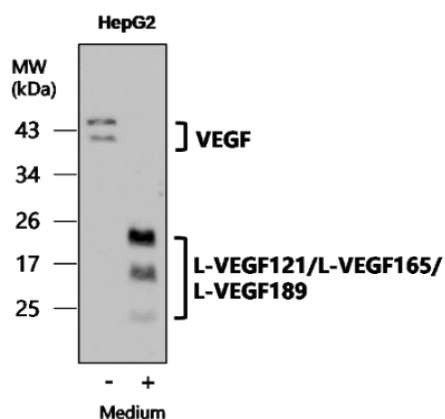
Anti-VEGF antibody

Package size: 100 µl
Store at: -20°C
MW (kDa): 40-45, 30-12

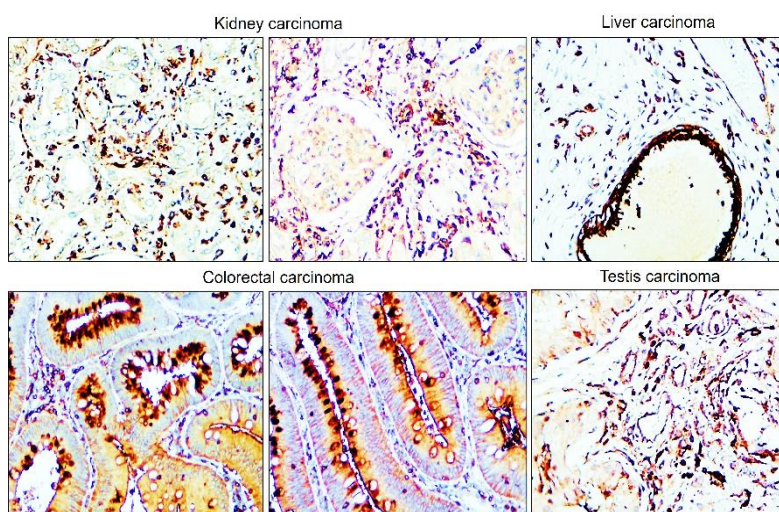
Overview

Product Name	VEGF antibody
Product Number	IR108-442
Gene Description	Vascular endothelial growth factor A
Specificity	Detects the 121, 165 and 189 VEGF isoforms
Clonality	Polyclonal
Host	Rabbit
Species Reactivity	Human, mouse, rat
Recommended Applications Dilutions	Western Blot 1:500 –1:1000 Immunofluorescence 1:200 – 1:500 Immunohistochemistry (Paraffin) 1:100 – 1:300 Immunoprecipitation : Reported in the literature, not verified in house.
Storage Buffer	100mM Tris Glycine, 20% Glycerol (pH7). 0.025% ProClin 300 was added as a preservative
Concentration	1.56 mg/ml
Purity	Affinity column purified
Storage	Store at +4°C for short term storage. Long time storage is recommended at -20°C
Notes	Gently mix before use. Optimal concentrations and conditions for each application should be determined by the user.

IR108-442 anti-VEGF antibody WB image



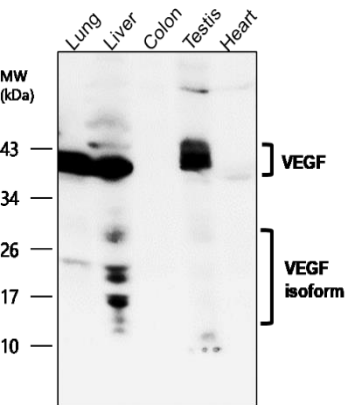
IR108-442 anti-VEGF antibody IHC image



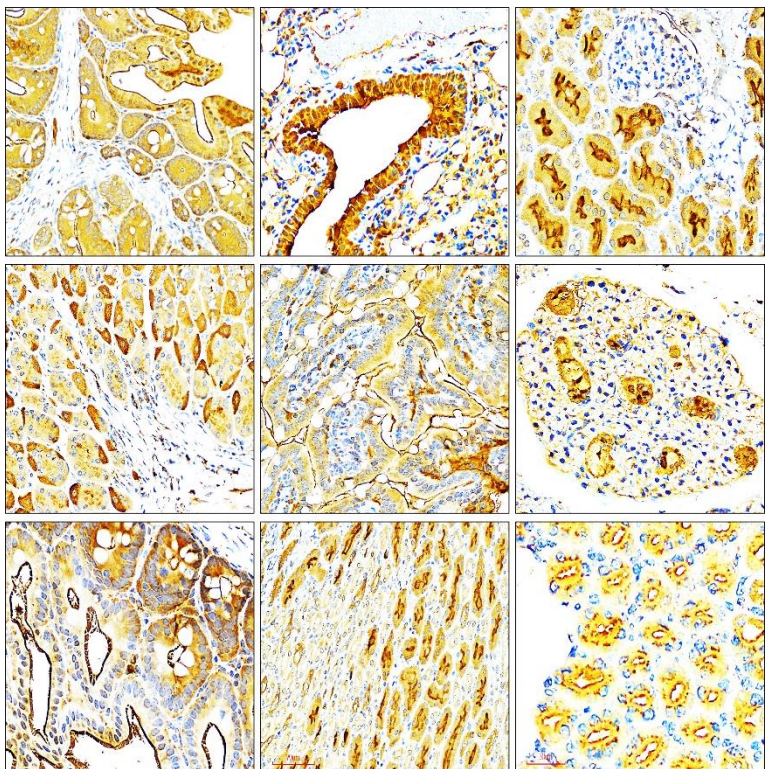
VEGF antibody at 1/1000 dilution
Lysates/proteins at 35 µg per lane.
This blot was produced using a 15% SDS-PAGE.

Immunohistochemical analysis of paraffin embedded Human cancer tissue labeling VEGF with IR108-442 at 1/100.

IR108-442 anti-VEGF antibody WB image



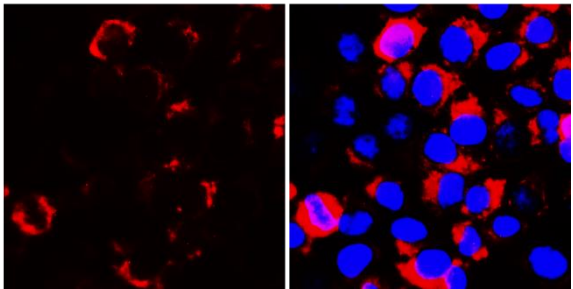
IR108-442 anti-VEGF antibody IHC image



VEGF antibody at 1/1000 dilution
Lysates/proteins at 35 µg per lane.
This blot was produced using a 15% SDS-PAGE.

Immunohistochemical analysis of paraffin embedded mouse tissue labeling VEGF with IR108-442 at 1/100 RT 1hr.
Epitope Retrieval methods: Citrate Buffer, pH 6.0
[Data from: Li-Tzung Biotechnology. Co](#)

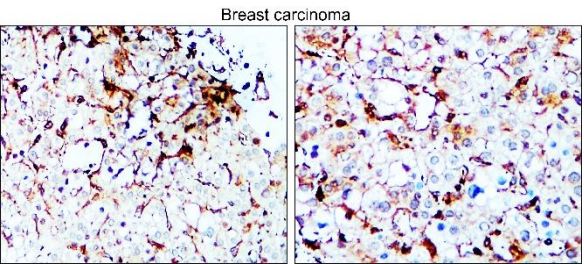
VEGF



IR108-442 anti-VEGF antibody ICC/IF image

Immunofluorescence: cells were fixed with 4% paraformaldehyde for 10 min at RT, permeabilized with 0.1% NP-40 for 10 min at RT then blocked with 5% BSA for 30 min at room temperature. Cells were stained with IR108-442 anti-VEGF antibody (red) at 1:200 and 4°C. DAPI (blue) was used as the nuclear counter stain.

IR108-442 anti-VEGF antibody IHC image



Immunohistochemical analysis of paraffin embedded Human cancer tissue labeling VEGF with IR108-442 at 1/100.

