

The ZM0756U Series All-in-one Zoom Monocular USB Digital Microscope



---

Contents

The ZM0756U Series All-in-one Zoom Monocular USB Digital Microscope.....	1
1 The ZM0756U Series All-in-one Zoom Monocular USB Digital Microscope.....	1
1.1 The ZM0756U Series' Basic Characteristic.....	1
1.2 The ZM0756U Series' Main Zoom Body TZM0756-W100-TV050's Characteristics.....	2
1.3 The Optional Objective Wxxx for TZM0756-Wxxx-TV50.....	2
1.4 The ZM0756U Series' USB2.0 CMOS Camera Module U830A.....	2
2 Connection of ZM0756U Series to Computer.....	3
3 ZM0756U Series' Packing Information.....	4
4 Sample Photos Captured with ZM0756U Series.....	1
5 Contacting Customer Service.....	1

# 1 The ZM0756U Series All-in-one Zoom Monocular USB Digital Microscope

## 1.1 The ZM0756U Series' Basic Characteristic



Figure 1 The main body of ZM0756U series

ZM0756U series all-in-one zoom monocular USB digital microscope is shown in Figure 1. It has 8x continuous zoom lens [TZM0756-W100-TV050](#), USB2.0 camera and LED ring light source [TZM0756DRL-NPC](#).

The USB camera module can directly complete the video and image acquisition with a computer, and the LED ring light source module is directly connected to the USB camera module through the main body of the optical continuous zoom lens with no need of the external power supply.

ZM0756U series meets the digital imaging observation, inspection and measurement in the fields of modern electronic equipment, semiconductor, laser, led, LCD, industrial on-line detection and biology.

The current models of ZM0756U series all-in-one zoom monocular USB digital microscope are shown in the table below:

Order Code	The Main Zoom body	Camera Module	可选照明模块
<a href="#">ZM0756U830A</a>	TZM0756-W100-TV050	U830A	LED Direct Ring Light with NPC (TZM0756DRL-NPC) LED Direct Ring Polarization Light with NPC (TZM0756DRPL-NPC)
<a href="#">ZM0756U510A</a>	TZM0756-W100-TV050	U510A	Coaxial Light Module with NPC (TZM0756CL-NPC)

NPC: No Power Connection

Standard Packing List	
A	Gift box: L:17.5cm W:17.5cm H:8.5cm (1pcs, 0.85kg/ box)
B	ZM0756U series main body
C	LED Direct Ring Light with No Power Connection (TZM0756DRL-NPC)
D	Micro USB data cable 1.5m
E	Power Adapter: Input: AC 100~240V 50Hz/60Hz, Output: DC 12V 1A American standard: Model: POWER-U-12V1A(MSA-C1000IC12.0-12W-US): UL/CE/FCC European standard: Model: POWER-E-12V1A(MSA-C1000IC12.0-12W-DE): UL/CE/FCC EMI standard: FCC Part 15 Subpart B EMS standard: EN61000-4-2,3,4,5,6
F	CD (Driver & utilities software, Ø12cm)
Optional Accessory	
G	The LED Direct Ring Polarization Light with No Power Connection (TZM0756DRPL-NPC)
H	Coaxial Light Module with No Power Connection (TZM0756CL-NPC)
I	The other Auxiliary Lens(Not shown)

1.2 The ZM0756U Series' Main Zoom Body TZM0756-W100-TV050's Characteristics

Optical Parameters	
Zoom Lens	TZM0756-W100-TV050 zoom lens, the main zoom body has 0.7X-5.6X zoom range
Working Distance	37.5mm-160mm (Determined by the auxiliary objective)
NA	0.018-0.092 (With W100, 1x auxiliary objective)
Resolution	18.6um-3.65um (With W100, 1x auxiliary objective)
Field	0.99mm-34.28mm
Optional Objective	0.50x, 0.75x, 1.00x, 1.50x, 2.00x (Optional)
Other Optional Objective	Infinite microscope objective (Both biological microscope objective and metallographic microscope objective can be used)
Dimensions	188mm x 52mm
Bracket Interface	Standard 50mm

1.3 The Optional Objective Wxxx for TZM0756-Wxxx-TV50

Auxiliary Objective	Specification	TV Lens TV050 for 1/3" Sensor	
		Low	High
W100, 1.0X(80mm WD)	PMAG	0.35X~2.80X	
	FOV	17.14mm	2.14mm
	NA	0.018	0.092
W050, 0.5X(160mm WD)	PMAG	0.18X~1.40X	
	FOV	34.28mm	4.28mm
	NA	0.009	0.046
W075, 0.75X(105mm WD)	PMAG	0.26X~2.10X	
	FOV	20.81mm	2.86mm
	NA	0.013	0.069
W150, 1.5X(51.5mm WD)	PMAG	0.53X~4.20X	
	FOV	11.43mm	1.43mm
	NA	0.026	0.138
W200, 2.0X(37.5mm WD)	PMAG	0.70X~5.60X	
	FOV	8.57mm	1.07mm
	NA	0.035	0.182
Remarks	When using coaxial lighting, low magnification may produce vignetting. When using infinity objectives as Auxiliary Lens Module (adapter available), the PMAG、FOV and NA of the TZM0756 depends on the parameters of the objectives.		

WD: Working Distance;

PMAG: Primary Magnification;

FOV: Field of View in the object side;

NA: Numerical Aperture;

Note: Infinity corrected objectives limit system's usable zoom range due to uneven illumination. The maximum sensor format is 2/3".

1.4 The ZM0756U Series' USB2.0 CMOS Camera Module U830A

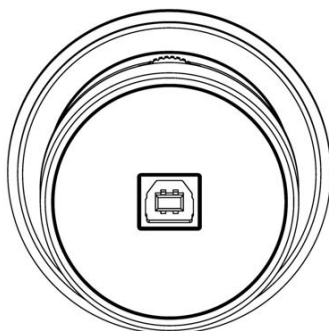


Figure 2 The top panel of ZM0756U series

The ZM0756U Series All-in-one Zoom Monocular USB Digital Microscope

Order Code	Sensor & Size(mm)	Pixel(μm)	G Responsivity Dynamic range SNRmax	FPS/Resolution	Binning	Exposure
U830A (New)	8.3M/IMX415(C) 1/2.8" (5.57x3.13)	1.45x1.45	300mV 70dB 44dB	30@3840x2160 30@1920x1080 30@1280x720 30@960x540	1x1 1x1 1x1	0.1-2000 ms
U510A (New)	5.1M/IMX335(C) 1/2.8" (5.18x3.89)	2.0x2.0	505mV 70dB 43dB	26@2592x1944 26@1280x960 26@640x480	1x1 1x1 1x1	0.1-2000 ms

C: Color; M: Monochrome;

Hardware Configurations	
Spectral Range	380-650nm (with IR-cut Filter)
White Balance	Auto
Color Technique	Ultra-Fine Color Engine/NA for Monochromatic Sensor
Capture/Control SDK	Windows/Linux/macOS/Android Multiple Platform SDK(Native C/C++, C#/VB.NET, Python, Java, DirectShow, Twain, etc)
Recording System	Still Picture and Movie
Operating Environment	
Operating Temperature(in Centidegree)	-10~ 50
Storage Temperature(in Centidegree)	-20~ 60
Operating Humidity	30~80%RH
Storage Humidity	10~60%RH
Power Supply	DC 5V over PC USB Port
Software Environment	
Operating System	Microsoft® Windows® XP / Vista / 7 / 8 / 10 (32 & 64 bit)/OSx(Mac OS X)/Linux
PC Requirements	CPU: Equal to Intel Core2 2.8GHz or Higher
	Memory:2GB or More
	USB Port: USB2.0 High-speed Port
	Display:17" or Larger
	CD-ROM
Lighting Module	
LED Ring Light	LED direct ring light with adjustable brightness(No power cable) ( TZM0756DRL-NPC )
LED Ring Polarization Light	LED direct ring polarization light with adjustable brightness(No power cable), ( TZM0756DRPL-NPC )
Coaxial Light Module	LED Coaxial Light Module with adjustable brightness(No power cable), (TZM0756CL_NPC)
Power Supply	Integrated power supply, no power cable winding trouble, sample observation more freely
Installation Method	Express second-level suction type installation, convenient and simple
Brightness Control	Through the 3-way multi-function adjusting wheel or software GUI, both the hardware and software can adjust the light intensity synchronously with no hassle

## 2 Connection of ZM0756U Series to Computer

Apart from the ZM0756U series, you only need an USB2.0 cable.



Figure 3 ZM0756U series connected to computer

### 3 ZM0756U Series' Packing Information



Figure 4 ZM0756U Series' Packing Information

<b>Standard Packing List</b>	
<b>A</b>	Gift box: L:17.5cm W:17.5cm H:8.5cm (1pcs, 0.85kg/ box)
<b>B</b>	ZM0756U series main body
<b>C</b>	LED Direct Ring Light with No Power Connection (TZM0756DRL-NPC)
<b>D</b>	Micro USB data cable 1.5m
<b>E</b>	Power Adapter: Input: AC 100~240V 50Hz/60Hz, Output: DC 12V 1A <b>American standard:</b> Model: POWER-U-12V1A(MSA-C1000IC12.0-12W-US): UL/CE/FCC <b>European standard:</b> Model: POWER-E-12V1A(MSA-C1000IC12.0-12W-DE): UL/CE/FCC EMI standard: FCC Part 15 Subpart B EMS standard: EN61000-4-2,3,4,5,6
<b>F</b>	CD (Driver & utilities software, Ø12cm)
<b>Optional Accessory</b>	
<b>G</b>	The LED Direct Ring Polarization Light with No Power Connection (TZM0756DRPL-NPC)
<b>H</b>	Coaxial Light Module with No Power Connection (TZM0756CL-NPC)
<b>I</b>	The other Auxiliary Lenes (Not shown)



Figure 5 LED Direct Ring Light ZM0756DRL-NPC



Figure 6 LED Direct Ring Polarization Light ZM0756DRPL-NPC



Figure 7 LED Coaxial Light ZM0756CL-NPC

#### 4 Sample Photos Captured with ZM0756U Series



Figure 8 1D bar code captured with ZM0756U830A

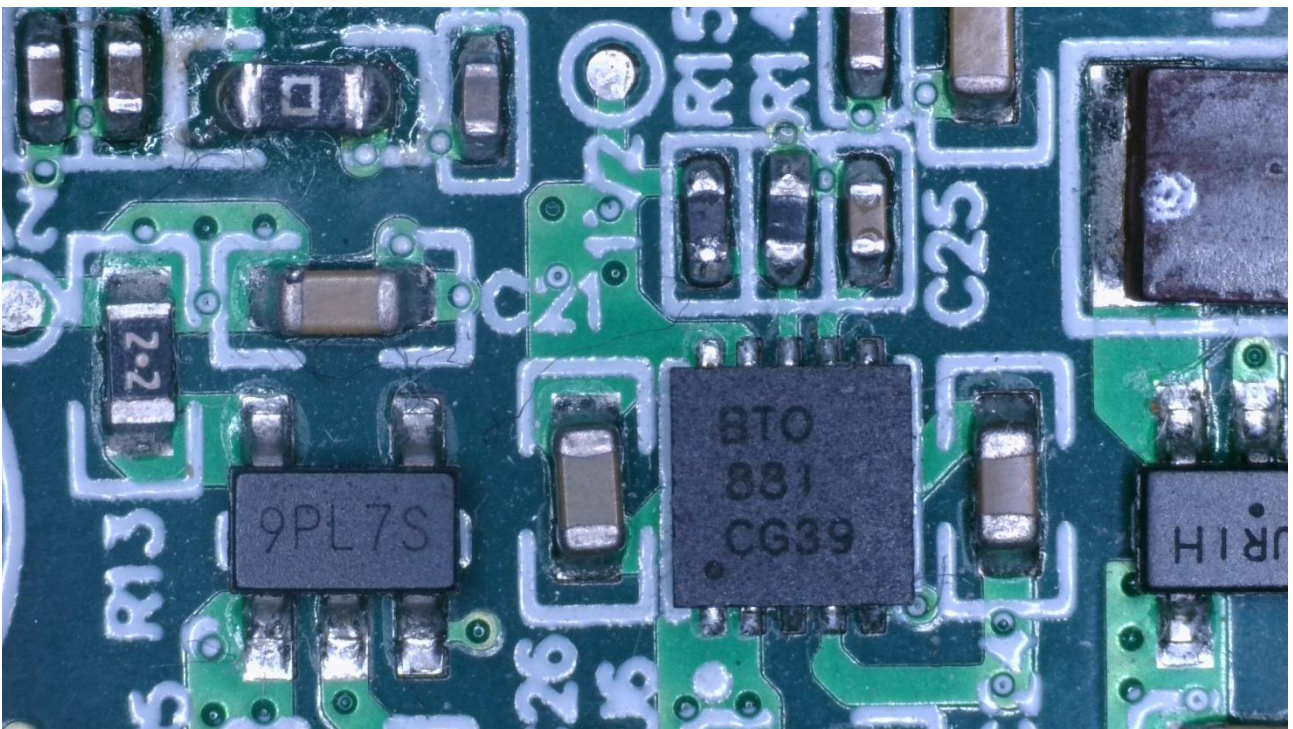


Figure 9 Circuit board captured with ZM0756U830A

#### 5 Contacting Customer Service

Please contact your local distributor if you have any questions about the product.