

# Wright-Giemsa Staining Kit

(Cat# K1438-30, -500; Store at RT)

## I. Introduction:

**Wright-Giemsa Staining Kit** is intended to be used for differential staining of blood smears, bone marrow and blood parasites.

**Erythrocytes: Pink-Tan**

**Leukocytes: Blue-Purple**

**Neutrophils: Light Purple or Lavender granules in cytoplasm.**

**Eosinophils: Bright Red or Red-Orange granules in cytoplasm.**

**Basophils: Deep Purple or Violet-Black granules in cytoplasm.**

**Platelets: Violet-Purple granules in light blue cytoplasm.**

## II. Application:

- Hematology applications
- For *in vitro* diagnostic use

## III. Sample Type:

- Blood smear on clean slide.

## IV. Kit Contents:

Components	K1438-30	K1438-500	Part Number	Storage Temperature
Wright-Giemsa Solution	30 ml	500 ml	K1438-XX-1	RT
Phosphate Buffer Solution (pH 6.8)	60 ml (x2)	500 ml (x2)	K1438-XX-2	RT

## Required but not included:

Components	Volume	Storage Temperature
Methanol, Absolute	500 ml	RT
Water, Deionized/Distilled	1 Gallon	RT

## V. User Supplied Reagents and Equipment:

- Deionized/Distilled water
- Coplin jars
- Forceps
- Staining tray
- Methanol, Absolute
- Synthetic resin
- PBS, pH 6.8

## VI. Shipment and Storage:

All the reagents are shipped and stored at room temperature.

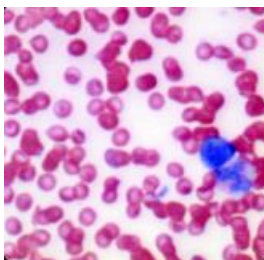
## VII. Reagent Preparation:

- Do not use past expiration date.
- Use caution when handling reagents.
- **Prepare Working Wright-Giemsa Solution** by mixing 25ml of Wright-Giemsa Solution with 25ml of Phosphate Buffer Solution, pH 6.8

## VIII. Procedure (Standard):

1. Smear a small drop of blood on a clean microscope slide and allow to air dry.
2. Fix by placing in absolute Methanol for 5 minutes.
3. Place slide in staining tray & flood with Working Wright-Giemsa Sol for 5 min. *Note: Agitate slide occasionally to insure proper staining.*
4. Rinse slide in deionized/distilled water.
5. Flood slide with Phosphate Buffer Solution, pH 6.8 until no stain runs off.
6. Allow slide to remain in Phosphate Buffer Solution, pH 6.8 for an additional 1 minute.
7. Dip slide in distilled water and air dry at room temperature.
8. Dip slide several times in Xylene or Xylene Substitute.
9. Mount in synthetic resin.

## IX. Data:



Wright-Giemsa Staining Kit

FOR RESEARCH USE ONLY! Not to be used on humans.